



Bellfield Gardens | Church Langley | Harlow | CM17 9QN

Asking Price £375,000



Belfield Gardens | Church Langley
Harlow | CM17 9QN
Asking Price £375,000

A SEMI DETACHED TWO BEDROOM HOUSE situated on a large plot. The property comprises of a spacious entrance hall, a modern fitted kitchen with a range of wall and base units, large lounge with ample dining space and conservatory. The first floor offers two generously sized double bedrooms and a family bathroom suite. The South/East facing garden is situated on a large plot and is low maintenance with direct access onto Garage and driveway to rear. Belfield Gardens is located in the sought-after area of Church Langley and is within close proximity to local amenities and schooling. Viewings highly recommended.

- Two Bedrooms
- Driveway & Garage
- Council Tax Band: D
- Semi-Detached House
- No Onward Chain
- EPC Rating: C

Entrance Hall

UPVC double glazed front door and window, radiator to wall, storage cupboard and stairs to first floor.

Kitchen

9'4" x 6'4" (2.84 x 1.93)

A modern fitted kitchen with a range of wall and base units, offering integrated oven, hob with extractor above, space for fridge freezer and plumbing for washing machine. Sink and drainer with mixer tap and UPVC double glazed window.





Lounge Diner

20'2" x 10'10" (6.15 x 3.3)

Large lounge with ample dining space featuring two UPVC double glazed windows, radiator to wall and UPVC patio doors leading to conservatory.

Conservatory

9'9" x 7'1" (2.97 x 2.16)

Quarter brick construction with UPVC double doors leading to Garden.

Landing

Spacious landing with storage cupboard, loft hatch and internal doors to double bedrooms and family bathroom.

Bedroom One

10'2" x 11'9" (3.1 x 3.58)

Good sized double bedroom with fitted wardrobes. UPVC double glazed window and radiator to wall.

Bedroom Two

13'3" x 9'3" (4.04 x 2.82)

Double bedroom with storage cupboard. Two UPVC double glazed windows and radiator to wall.

Bathroom

7'5" x 6'4" (2.26 x 1.93)

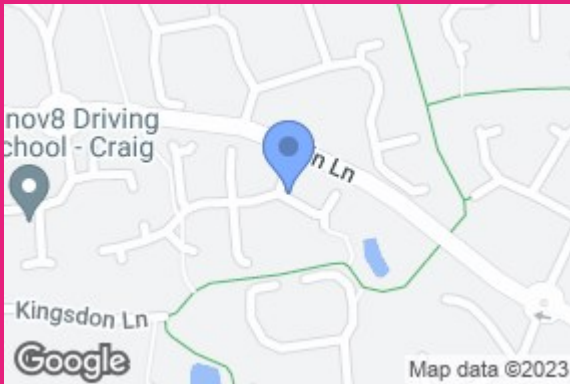
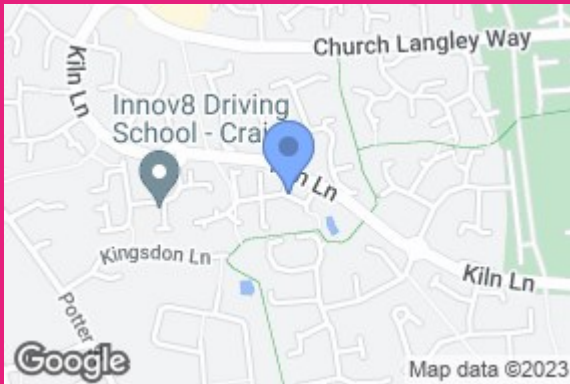
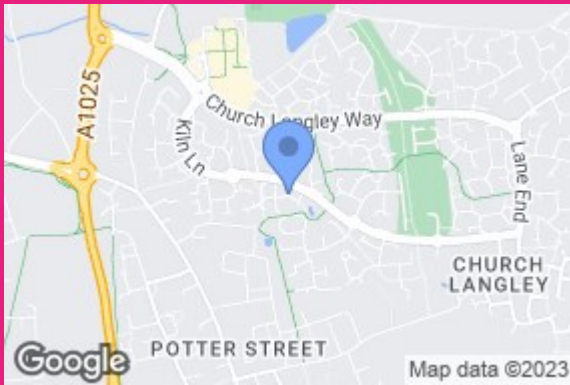
A recently fitted family bathroom suite benefitting from large shower with thermostatic control, white toilet and vanity sink. Chrome heated towel rail, extractor fan and UPVC double glazed window.

Garden

A private South/East facing garden. The low maintenance garden benefits from ample entertaining space with decking. Secure rear gate leading to Single Garage and parking for two cars.



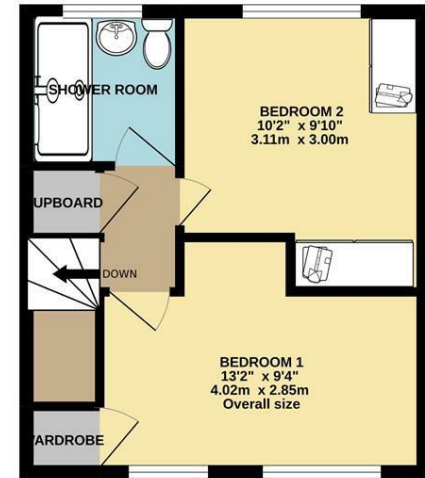




GROUND FLOOR
369 sq.ft. (34.3 sq.m.) approx.



1ST FLOOR
315 sq.ft. (29.3 sq.m.) approx.



TOTAL FLOOR AREA: 685 sq.ft. (63.6 sq.m.) approx.

Whilst every attempt has been made to ensure the accuracy of the floorplan contained here, measurements of doors, windows, rooms and any other items are approximate and no responsibility is taken for any error, omission or mis-statement. This plan is for illustrative purposes only and should be used as such by any prospective purchaser. The services, systems and appliances shown have not been tested and no guarantee as to their operability or efficiency can be given.
Made with Metropix ©2022

Energy Efficiency Rating		Current	Potential
Very energy efficient - lower running costs			
(92 plus)	A		87
(81-91)	B		
(69-80)	C	72	
(55-68)	D		
(39-54)	E		
(21-38)	F		
(1-20)	G		
Not energy efficient - higher running costs			
England & Wales		EU Directive 2002/91/EC	

Equity House
4-6 Market Street
Harlow
Essex
CM17 0AH
01279 400444
hello@clarknewman.co.uk